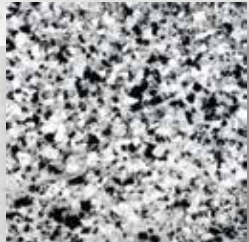
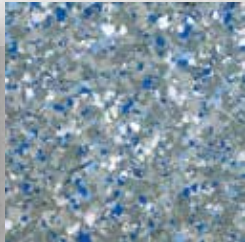




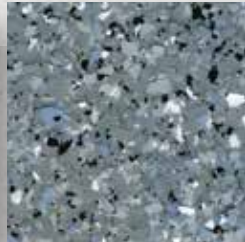
## Signature Acrylic Flake Blends



**Black & White Blend**  
EPFLK510 • EP-FLK550



**Blue Blend**  
EPFLK110 • EP-FLK150



**Gray Blend**  
EPFLK310 • EP-FLK350



**Beige Blend**  
EPFLK310 • EP-FLK350



**Sahara Blend**  
EPFLK410 • EP-FLK450



**Brown Blend**  
EPFLK610 • EP-FLK650

## Signature Quartz Blends



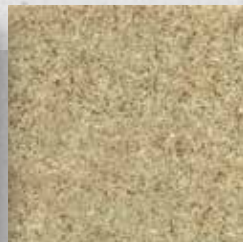
**Gray Blend**  
EP-QTZ250



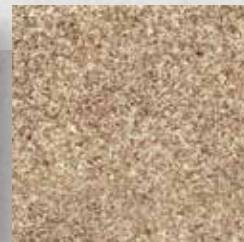
**Natural Blue Blend**  
EP-QTZ550



**Red Blend**  
EP-QTZ150



**Cream Blend**  
EP-QTZ350

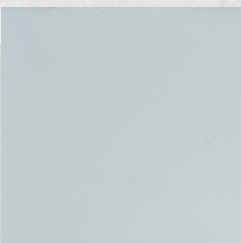


**Mocha Blend**  
EP-QTZ450



**Brown Blend**  
EP-QTZ650

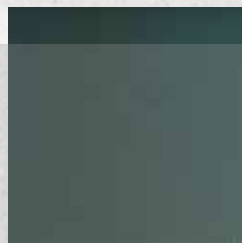
## Pigment Colors



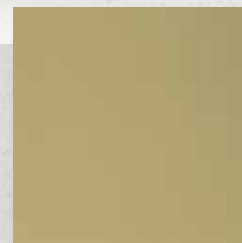
**Concrete Gray**



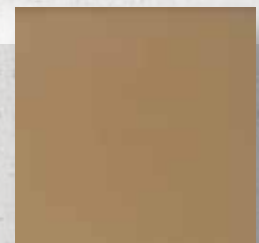
**Medium Gray**



**Dark Gray**



**Tan**



**Sand Beige**

This color chart is a representation only and does not guarantee that the final color will be an exact match or even reasonably close to the sample. The colors produced will rely heavily on skill, practice and experimentation.



## Application Methods

This information is provided as a reference only. Please refer to the specific product's Technical Data Sheets for detailed mixing and application instructions.

### Coverage

Base coat applications average 10-16 mils (100-160ft<sup>2</sup> per gallon.) Product coverage is dependent upon the existing substrate surface profile and thickness of designed broadcast systems, among other variables.

### Surface Preparation

An MVER test should be performed prior to application. Shield Epoxies are designed for application to concrete substrates only. All loose and deteriorated concrete must be removed to a sound surface. Concrete must be clean, sound and free of dust, grease, waxes, coatings, curing compounds and all other contaminants. Shot blasting is preferred above all other preparation methods. Other methods include grinding or etching with muriatic acid and pressure washing with a minimum of 3000psi at 3-4 gpm.

### Mixing

Pre-mix component "A" then pour component "B" into "A" (based on published ratio) and mix for 90 seconds with a low speed paddle attached to a mechanical drill. Apply product immediately.

**CAUTION:** Shield Epoxy cure rates are dramatically increased when in volume. Do not leave in container in mass as large amounts of Shield Epoxy materials develop extreme heat and can result in wasted material, removal of affected coating areas and/or injury from excessive heat. To avoid mistakes and prevent waste, it is highly recommended to mix only enough material as can be applied in 10-15 minutes.

### Application

Refer to appropriate TDS for installation instructions for all Shield Epoxy products. Pour the entire mixed contents on the floor. Do not scrape the sides of the bucket or place it upside down on the surface. Using a squeegee, disperse material to all areas at an even thickness. Pull the material with the squeegee in a left to right motion. At a slow-medium pace, back roll all areas using a 3/8" nap roller. (Squeegee East to West and back roll North to South.) This removes lines left by the squeegee and works out air bubbles. Roll only enough to level material. **DO NOT OVERWORK OR ROLL AFTER APPLICATION HAS BEGUN TO CURE.**

Broadcast media (flake/quartz) as desired and/or needed. Spiked shoes may be used to access wet areas to broadcast until a dry medium remains on the surface. Do not drag feet when using spiked shoes. Avoid walking on broadcast media once applied.

### Topcoat

Topcoat application will be similar to first coat application. Topcoat must be applied within 24 hours of application of first coat. If applying a urethane or wax coating to topcoat, it, too, must be applied within 24 hours. If 24 hour window is missed or unattainable, degloss the surface and apply as normal.

### Cleanup

Clean all tools with a clean cloth or rag. If material is tacky, use an approved solvent to help aid in the clean up process. Do not use solvents to remove material on skin.